



Artificial Intelligence in Agriculture: Transforming Farming with Innovation, Benefits, and Challenges

*Saraswathi S

JKK Munirajah College of Agricultural Science, India

*Corresponding Author's email: sarasukolanji2003@gmail.com

Artificial Intelligence (AI) is transforming agriculture by enabling higher productivity with limited resources as the global population approaches 9.7 billion by 2050. Instead of expanding farmland, AI improves efficiency through precision crop monitoring, smart irrigation, autonomous machinery, pest detection, yield forecasting, livestock management, and supply chain optimization. These applications increase yields, reduce environmental impact, lower input costs, and support smallholder farmers by making expert knowledge more accessible. However, challenges such as poor-quality data, limited rural connectivity, high equipment costs, low digital literacy, and concerns about data ownership and algorithm bias restrict widespread adoption. Overall, AI presents a powerful solution for sustainable agriculture while highlighting the need to address these barriers for large-scale implementation.

Introduction

Artificial intelligence (AI) is bringing intelligent, effective, data-driven farming methods that are drastically changing the agriculture industry. AI technologies including computer vision, machine learning, and predictive analytics are being utilized to increase agricultural output, optimize resource use, and lessen environmental impact as part of developments in artificial intelligence and agriculture. With AI-powered technologies, farmers can now track crop growth, weather, and soil health in real time, facilitating precision farming and improved decision-making. Additionally, AI reduces losses and boosts efficiency by assisting with yield forecast, smart irrigation systems, and early pest and disease identification. AI in agriculture provides sustainable solutions to improve food security and support contemporary farming methods in light of the world's expanding food demand and the problems caused by climate change.

Applications of Artificial Intelligence in Agriculture

1. Precision Farming:

One of the most important uses of AI in agriculture is precision farming, where data-driven methods are applied to enhance productivity and optimize farm inputs. AI systems deliver precise information on crop health, soil conditions, and field variability by analyzing data gathered from sensors, satellites, and GPS technology. Farmers can use the appropriate amount of water, fertilizer, and pesticides at the appropriate time and location based on this study. This makes farming more effective and sustainable by lowering resource waste, increasing agricultural yield, and minimizing environmental impact.

2. Crop Monitoring and Disease Detection

AI is essential for tracking crop health and early disease detection. Artificial intelligence (AI) systems can detect indicators of insect infestations, illnesses, and nutrient deficits by analyzing photos taken by drones, satellites, or smartphones using technologies like computer vision and machine learning. By minimizing the spread of diseases and lowering crop losses,

early identification enables farmers to take prompt action. In large-scale farming, where manual monitoring is challenging and time-consuming, this application is especially helpful.

Best uses of artificial intelligence in agriculture

This slide presents best uses of AI in agriculture helpful in improving overall harvest quality and accuracy and helps analyzing data from various remote sensors. It includes crop and soil monitoring, observing crop maturity, livestock health monitoring and automatic weeding.

- Crop and soil monitoring**
 - Tracking crop health and predicting yield through visual sensing
 - Image recognition technology to automatically detect plant diseases and pests
 - Add text here
- Observing crop maturity**
 - Detecting maturity vegetables using drones or unmanned aerial vehicles
 - Computer vision model that saves time consuming labour intensive work
 - Add text here
- Livestock health monitoring**
 - Tracking and explaining cattle through Cattle Eye technology training data
 - Overhead cameras and vision algorithms to supervise cattle health
 - Add text here
- Intelligent spraying**
 - UAVs with computer vision AI automate spraying pesticides and fertilizers uniformly
 - High precision spraying with real time recognition to reduce risk of contamination
 - Add text here
- Automatic weeding**
 - Weeding robots like BoniRob that navigate existing weeds without herbicide applications to destroy them
 - Computer vision algorithms combined with machine learning for weeding
 - Add text here

This slide is 100% editable. Adapt it to your needs and capture your audience's attention.

3. Smart farming equipment (Automation)

Smart farming equipment that automates a variety of farming tasks has been developed as a result of the incorporation of AI into agricultural machinery. AI-powered planting machines, autonomous tractors, and robotic harvesters can all carry out activities like plowing, sowing, and harvesting with great accuracy and efficiency. These devices boost productivity, minimize operating costs, and lessen reliance on manual labor. Additionally, automation guarantees reliable performance, which is crucial for large-scale farming operations.

4. Weather Prediction and Forecasting

Successful farming depends on accurate weather forecasts, and AI greatly enhances forecasting capabilities. AI models forecast temperature, humidity, rainfall, and extreme weather events by analyzing satellite data, historical weather data, and present climate conditions. These forecasts assist farmers in making well-informed choices on fertilization, irrigation, harvesting, and seeding. As a result, farmers may enhance overall crop management and lower risks related to erratic weather.

5. Irrigation Management

AI-based irrigation systems monitor weather and soil moisture levels to help in water resource efficiency. Sensors and AI algorithms are used by smart irrigation systems to autonomously regulate irrigation schedules and ascertain the precise water needs of crops. This preserves water, avoids overwatering and underwatering, and guarantees the best possible crop development. In areas where water is scarce, these systems are particularly beneficial.

6. Agricultural Robotics

Another important use of AI is agricultural robotics, where machines are used to carry out tasks like planting, harvesting, weeding, and spraying. AI-enabled robots can operate with high precision and efficiency, eliminating the need for manual labor. For instance, robotic harvesters can recognize ripe fruits and pick them without causing damage to the plants, increasing efficiency, saving time, and lowering labor costs for farmers.

7. Predictive Analytics for Crop Yield

By examining past data, weather, soil quality, and crop patterns, AI assists farmers in forecasting crop yield. Farmers can make well-informed decisions regarding planting and resource allocation by using predictive analytics models, which offer insights into future production levels. Planning supply chains, lowering risks, and guaranteeing food security are all made easier with this program.

8. Soil Health Analysis

AI technologies are used to assess soil health by analyzing various parameters such as nutrient levels, pH value, and moisture content. Sensors and AI models provide detailed insights into soil conditions, enabling farmers to take corrective measures like adding fertilizers or organic matter. Healthy soil leads to better crop growth and long-term sustainability of agricultural land.

9. Weed Detection and Management

AI-driven systems can use computer vision techniques to recognize weeds among crops. These technologies enable targeted weed control by distinguishing between undesired plants and crops. This avoids environmental harm, cuts expenses, and lessens the need for excessive herbicide use. By lessening competition for nutrients, automated weed control also enhances crop development.

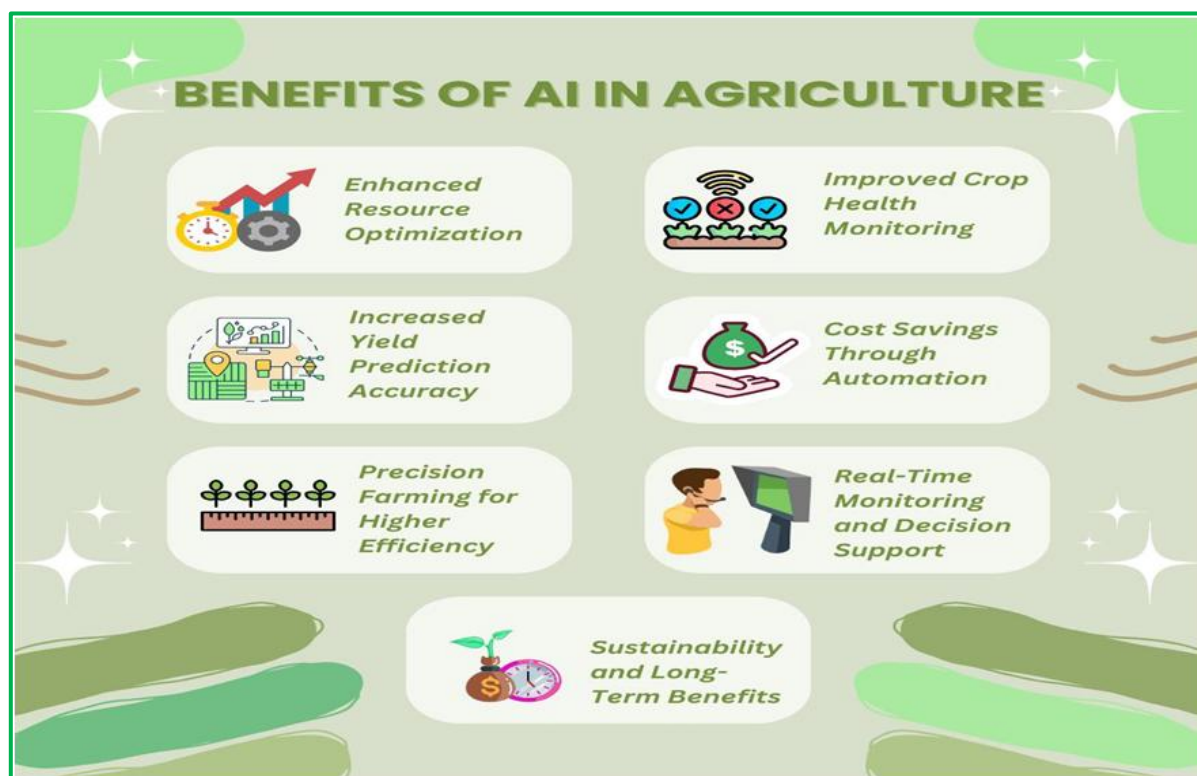
10. Supply Chain Optimization

Demand forecasting, storage management, and transportation planning are all improved by AI in the agricultural supply chain. It aids in forecasting consumer demand, lowering post-harvest losses, and guaranteeing supply delivery on schedule. Additionally, AI systems can forecast prices, assisting farmers in determining when to sell their produce to maximize profits.

11. Livestock Monitoring and Management

AI is commonly used in livestock husbandry to track the productivity, behavior, and health of the animals. Vital signs like body temperature, eating patterns, and mobility are monitored by wearable technology and smart sensors. AI examines this data to improve breeding techniques, identify illnesses early, and increase animal welfare in general. Dairy and meat production become more productive as a result.

Advantages of AI in Agriculture



- **Increased Productivity:** AI-guided precision management of inputs, such as water, fertilizer, and pesticides, has been shown to increase yields in AI-managed fields by 15–30% when compared to conventional management, with some high-value crops seeing larger benefits.
- **Reduced Input Costs:** AI-guided variable-rate spraying typically reduces pesticide consumption by at least 25% and fertilizer use by 15% to 20%. Savings for big businesses can amount to hundreds of thousands of dollars per year. Season profitability for smallholder farmers can be determined by even slight decreases in input costs.
- **Environmental Sustainability:** Nitrous oxide emissions and nitrogen runoff are decreased when there is less fertilizer. Reduced use of pesticides reduces contamination of the land and water. Freshwater conservation is achieved through precision irrigation. Soils that are healthier and better maintained store more carbon. AI agriculture provides a viable way to increase output while simultaneously reducing emissions and the environmental impact.
- **Early Warning and Risk Mitigation:** Early detection of pest invasions, disease outbreaks, and unfavorable meteorological conditions is made possible by AI predictive models. The financial and food-security effects of agricultural crises are considerably lessened by intervention before issues worsen. Decision-support tools that lower volatility and safeguard livelihoods are provided to farmers.
- **Labour Efficiency:** AI-assisted operations and autonomous machines lessen reliance on limited seasonal labor, allowing current agricultural laborers to be used more effectively. As labor markets tighten and wage costs rise, output per worker increases significantly, supporting agricultural viability.
- **Democratisation of Expertise:** Smallholder farmers in developing economies now have access to advanced agronomic expertise that was previously only available to large commercial enterprises with consultant access thanks to AI mobile applications. With a smartphone, a farmer in rural Kenya or India can get the same level of crop management guidance and disease diagnosis as agribusiness companies. Perhaps AI's most important social contribution is this.
- **Improved Food Quality and Safety:** More uniform food quality standards are guaranteed from farm to consumer thanks to AI vision-based grading and contaminant detection. Enhanced traceability, or tracing produce from the farm to the shelf, improves food safety protocols and lowers waste from product recalls.

Challenges of AI in agriculture

- The high initial cost of integrating AI technologies is one of the main problems. Drones, sensors, automated equipment, and data analytics platforms are examples of advanced instruments that might be costly for small and marginal farmers. This becomes a significant obstacle to widespread adoption in developing nations like India, where smallholders dominate agriculture.
- The absence of internet infrastructure in rural areas is another significant obstacle. Cloud computing, real-time data exchange, and internet access are critical components of AI systems. Nonetheless, a lot of rural areas continue to have inadequate network coverage and little access to dependable electricity. This digital gap limits the spread of smart farming technologies and prevents farmers from utilizing AI-based solutions in an efficient manner.
- Another major problem is farmers' lack of technical expertise. The majority of farmers lack the necessary training to use AI-driven equipment or decipher complicated data outputs. Even cutting-edge technologies may continue to be underutilized in the absence of adequate training and extension services. It will take ongoing education, training initiatives, and user-friendly AI systems designed with farmers' requirements in mind to close this knowledge gap.
- Another major issue is the quality and availability of data. For AI systems to make wise decisions, they require massive amounts of timely and reliable data. However, data

gathering in agriculture may be unreliable, disjointed, or out-of-date. The accuracy and dependability of AI forecasts may be impacted by factors that make data standardization challenging, such as crop variations, soil variety, and weather fluctuation.

- Furthermore, it is still difficult for AI models to adapt to various agricultural situations. Climate, soil type, cropping patterns, and farming techniques are all very different in different parts of the world. AI programs created for one area could not function effectively in another, necessitating the localization and customization of technologies for other settings.
- Lastly, there are issues with societal effect and job displacement. Rural employment may be impacted by the growing use of automation and robotics in agriculture, which could lower the need for physical labor. AI has the potential to open up new possibilities, but controlling this shift is essential to preventing technological progress from causing societal injustice.

Conclusion

AI is changing agriculture by increasing sustainability, production, and efficiency. AI helps farmers make educated decisions and maximize the use of resources like water, fertilizer, and pesticides through cutting-edge technologies like precision farming, crop monitoring, and predictive analytics. In addition to increasing crop productivity, this reduces the impact on the environment. To guarantee inclusive adoption, however, issues including exorbitant costs, a lack of technical expertise, inadequate rural infrastructure, and worries about data security must be resolved. AI should be viewed as a helpful tool that enhances rather than replaces conventional farming methods. AI has the ability to transform agriculture and guarantee food security for the expanding global population in a sustainable and effective manner with the right training, government support, and technical accessibility.

References

- Food and Agriculture Organization. (2020). The state of food and agriculture 2020. FAO.
- Mohanty, S.P., Hughes, D.P., & Salathé, M. (2016). Using deep learning for image-based plant disease detection. *Frontiers in Plant Science*, 7, 1419.
- Ryan, M., Isakhanyan, G., & Tekinerdogan, B. (2023). An interdisciplinary approach to artificial intelligence in agriculture. *NJAS: Impact in Agricultural and Life Sciences*, 95(1).
- Frontiers in Sustainable Food Systems. (2025). The values, challenges, and strategies of AI in empowering sustainable livelihoods for farmers. *Frontiers Media*.