

## How Plant Diseases Start: The Hidden World Inside Plant Cells

\*A. Uma Maheswari<sup>1</sup>, B. China Gopi<sup>1</sup> and Dr. M.L.N. Nandini<sup>2</sup>

<sup>1</sup>Fourth Year BSc. (Hons.) Agriculture, Vignan Institute of Agriculture and Technology, Vignan's Foundation for Science, Technology and Research, Vadlamudi-522213, Andhra Pradesh

<sup>2</sup>Assistant Professor, Vignan Institute of Agriculture and Technology, Vignan's Foundation for Science, Technology and Research, Vadlamudi-522213, Andhra Pradesh

\*Corresponding Author's email: [umaatla5555@gmail.com](mailto:umaatla5555@gmail.com)

Have you ever seen leaves turning yellow, plants wilting unexpectedly, or crops covered with spots and patches? While these symptoms are easy to notice, the real cause of these problems begins deep inside the plant—within its tiny cells. Just like in humans, diseases in plants start at a microscopic level long before visible signs appear. Exploring this hidden world helps us understand how plants fall sick and how we can protect them.

### The Invisible Life Inside Plants

Plants may appear still and simple, but internally they are highly active. They are made up of millions of cells working together in harmony. These cells:

- Produce food through photosynthesis
- Store energy
- Transport water and nutrients
- Protect against environmental stress

When all these processes function properly, the plant grows healthy and strong. However, when this balance is disturbed, disease begins silently.

### Causes of Plant Diseases

Plant diseases are mainly caused by **pathogens** and unfavourable environmental conditions.

#### 1. Pathogenic Causes

- **Fungi** – the most common cause (e.g., rusts, mildews, blights)
- **Bacteria** – cause leaf spots, wilting, and rotting
- **Viruses** – lead to mosaic patterns, curling, and stunted growth
- **Nematodes** – microscopic worms that damage roots

#### 2. Environmental Causes

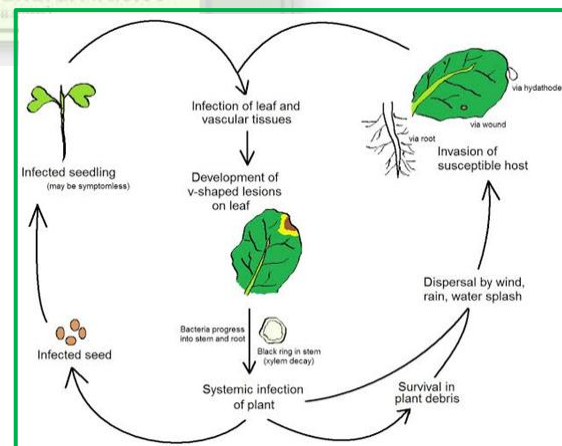
- Drought or excess water
- Poor soil quality
- Nutrient deficiencies
- Extreme temperatures

These factors weaken plant cells and make them more vulnerable to infection.

### Entry of Pathogens into Plants

For disease to start, pathogens must first enter the plant. They do this through:

- **Natural openings** like stomata (tiny pores on leaves)
- **Wounds** caused by insects, tools, or physical damage



- **Roots**, especially in soil-borne infections  
Once inside, pathogens multiply rapidly and begin to interfere with normal cell activities.

### Cell Injury in Plants

After entering the plant, pathogens attack and damage cells. This leads to:

- Breakdown of cell walls
- Disruption of cell membranes
- Damage to chloroplasts (affecting photosynthesis)
- Reduced energy production

Initially, the damage may be mild and reversible. But if the infection continues, it becomes severe and leads to permanent cell injury or death.

### Plant Defense Mechanisms

Plants have developed several natural defense systems to fight infections.

#### 1. Structural Defenses

- Thick cell walls
- Waxy cuticle on leaves
- Bark in trees

These act as physical barriers against pathogens.

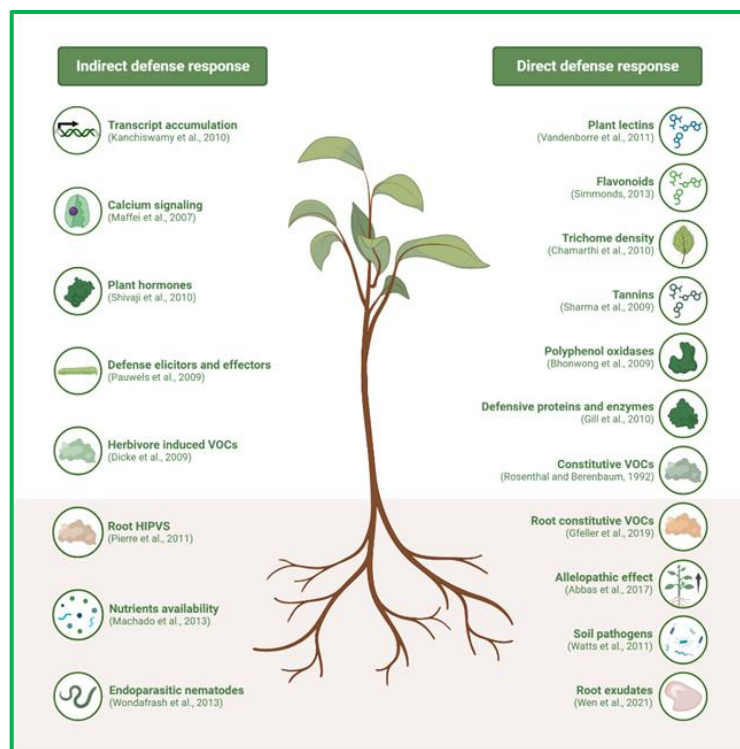
#### 2. Chemical Defenses

Plants produce special substances like:

- Antimicrobial chemicals
- Enzymes that destroy pathogens

#### 3. Hypersensitive Response

Plants sometimes sacrifice a small group of infected cells by killing them quickly. This prevents the pathogen from spreading further.



### From Cellular Damage to Visible Symptoms

As cell damage increases, the plant begins to show visible signs of disease:

- **Chlorosis** – yellowing of leaves due to loss of chlorophyll
- **Necrosis** – dead tissue appearing as brown or black spots
- **Wilting** – due to failure in water transport
- **Stunted growth** – reduced development of plant

These symptoms indicate that the disease has progressed from the cellular level to the whole plant.

### Spread of Plant Diseases

Plant diseases can spread rapidly from one plant to another through:

- **Air (wind)** – carries fungal spores
- **Water (rain, irrigation)**
- **Insects** – act as carriers (vectors)
- **Soil and tools** – contaminated sources

This is why a small infection can turn into a large outbreak affecting entire fields.

### Disease Cycle in Plants

Plant diseases often follow a cycle:

1. Pathogen survives in soil or plant debris
2. Spreads to a healthy plant

3. Enters the plant and infects cells
  4. Multiplies and causes symptoms
  5. Produces new pathogens that spread further
- Understanding this cycle helps in controlling diseases effectively.

### Modern Advances in Plant Pathology

Today, scientists use advanced tools to detect and study plant diseases:

- **Microscopy** to observe infected cells
- **Molecular techniques** to identify pathogens quickly
- **Remote sensing and AI** to detect diseases in crops early
- **Genetic engineering** to develop disease-resistant plants

These technologies help improve crop protection and food production.

### Prevention and Control of Plant Diseases

Preventing disease is more effective than curing it. Important methods include:

- Growing **disease-resistant varieties**
- Practicing **crop rotation**
- Maintaining proper **irrigation and drainage**
- Using **clean tools and healthy seeds**
- Applying **fungicides or pesticides** when necessary

Good agricultural practices help reduce disease spread.

### A Simple Way to Understand

Imagine a plant as a factory:

- Cells are workers
- Leaves produce food
- Roots supply water and nutrients

When pathogens attack, workers get damaged, production slows down, and the factory begins to fail. This is how disease develops in plants.

### Conclusion

Plant diseases begin quietly within tiny cells, long before visible symptoms appear. From pathogen entry to cell injury and eventual damage to the whole plant, every stage occurs in a hidden microscopic world. By understanding these processes, we can take better steps to protect plants, improve crop yield, and ensure food security. Healthy plants are essential for a healthy environment and human survival.

### References

1. Food and Agriculture Organization (FAO)
2. Indian Council of Agricultural Research (ICAR)
3. American Phytopathological Society
4. International Plant Protection Convention (IPPC)
5. *Plant Pathology* by George N. Agrios