



ELISA Technology: Transforming Modern Agriculture

*Jinal Radadiya¹, Divya Karavdra¹, Disha Kumbhani¹, Krishna Kanara¹,
Dr. M. V. Parakhiya² and Dr. Jay M. Khaniya³

¹M.Sc. Scholar, Department of Genetics and Plant Breeding, CoA, JAU, Junagadh

²Associate Professor, Department of Biotechnology, CoA, JAU, Junagadh

³Assistant Professor, Department of Biotechnology, CoA, JAU, Junagadh

*Corresponding Author's email: jinalradadiya268@gmail.com

Rapid identification of plant pathogens, pesticide residues and food contaminants has become increasingly important in modern agriculture. Enzyme-Linked Immunosorbent Assay (ELISA) offers a reliable, cost-effective and highly sensitive approach for detecting a wide range of biological and chemical targets. Its applications extend from plant disease diagnosis and seed health testing to food safety assessment and environmental monitoring. This article highlights the principles, major types, agricultural applications, advantages, limitations and future prospects of ELISA technology.

Introduction

Feeding a growing global population while ensuring food quality and environmental sustainability remains one of the greatest challenges facing modern agriculture. Early detection of plant diseases and contaminants is essential for minimizing crop losses and maintaining food safety. Among the various diagnostic tools available today, ELISA has emerged as one of the most reliable and widely adopted techniques due to its simplicity, accuracy and affordability. Since its development in the 1970s, ELISA has become an important diagnostic tool in agricultural sciences. The technique is widely used in plant pathology, seed technology, animal husbandry, food processing and environmental monitoring. (Clark and Adams, 1977; Crowther, 2000).

Principle of ELISA

The effectiveness of ELISA is based on the highly specific interaction between an antigen and its corresponding antibody. When a target molecule is present in a sample, it binds to a specific antibody. An enzyme attached to the antibody then reacts with a suitable substrate, producing a visible colour change. The intensity of the colour reflects the concentration of the target molecule, allowing both qualitative and quantitative analysis. (Crowther, 2000; Wild, 2013).

Types of ELISA

1. Direct ELISA

In Direct ELISA, an enzyme-labelled primary antibody binds directly to the target antigen immobilized on the microplate. The method is simple, rapid and requires fewer reagents compared to other ELISA formats.

Result: Produces a colour change proportional to the amount of antigen present. It is commonly used for rapid screening of plant pathogens and antigen detection where high sensitivity is not critical.

2. Indirect ELISA

Indirect ELISA employs an unlabeled primary antibody that binds to the antigen, followed by an enzyme-linked secondary antibody for detection. The use of a secondary antibody enhances signal amplification and sensitivity.

Result: Generates a stronger colour reaction than Direct ELISA, allowing detection of low concentrations of antigens or antibodies. It is widely used in plant disease diagnosis and serological surveys.

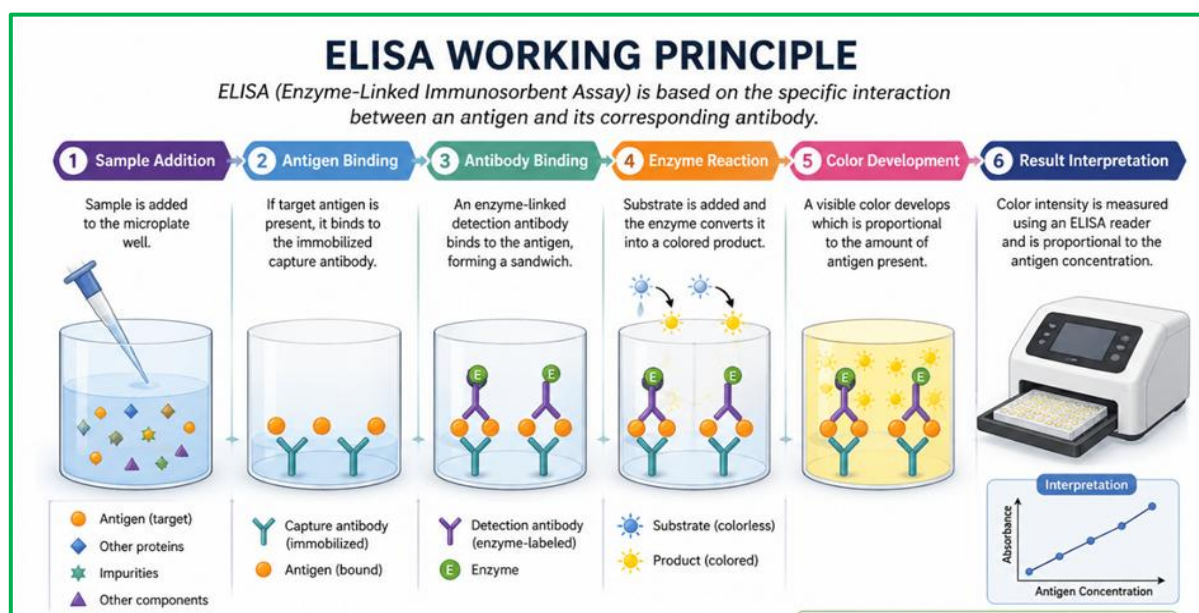


Fig 1. ELISA Workflow

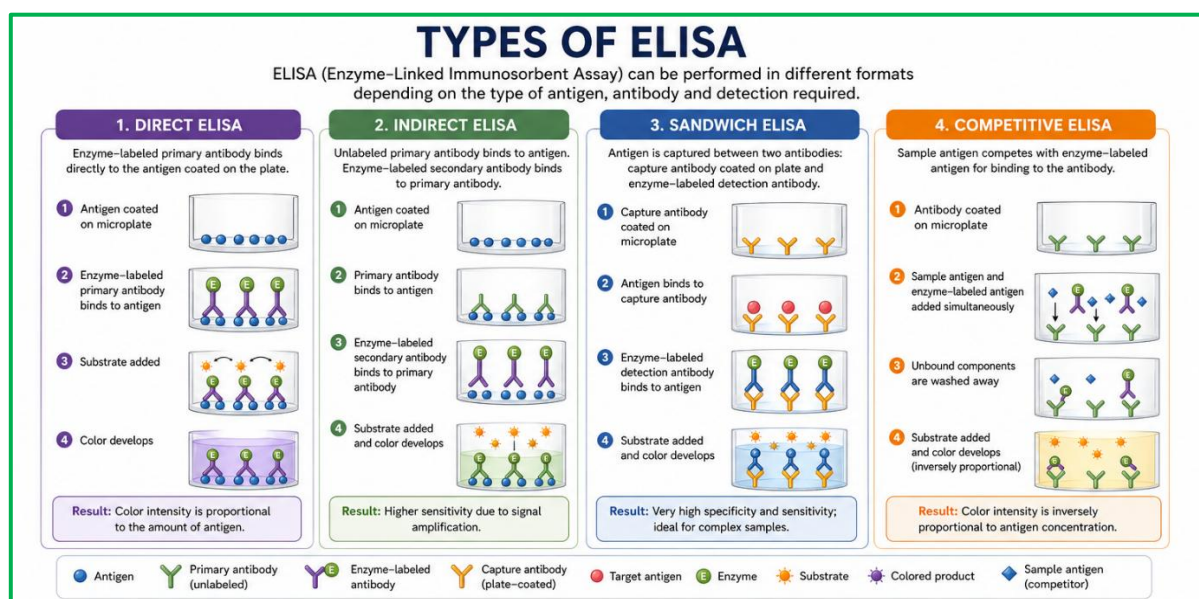


Fig 2. Overview of major ELISA types

3. Sandwich ELISA

In Sandwich ELISA, the target antigen is captured between two specific antibodies: a capture antibody attached to the plate and a detection antibody linked to an enzyme. This format provides high specificity because two antibody-antigen interactions occur.

Result: Produces highly accurate and sensitive quantification of antigens even in complex samples. It is extensively used for detecting plant viruses, bacterial pathogens and protein biomarkers in agricultural samples.

4. Competitive ELISA

Competitive ELISA is based on competition between labelled and unlabeled antigens for binding sites on a specific antibody. As the concentration of antigen in the sample increases, the measured signal decreases.

Result: The colour intensity is inversely proportional to antigen concentration. This method is particularly useful for detecting small molecules such as pesticides, herbicides, toxins and hormone residues in agricultural products and environmental samples.

Applications of ELISA in Agriculture

1. Detection of Plant Pathogens

One of the most important agricultural applications of ELISA is the early detection of plant pathogens. The technique enables rapid identification of viruses, bacteria and fungi before visible symptoms become severe. Viruses such as Tobacco Mosaic Virus (TMV), Potato Virus Y (PVY) and Tomato Spotted Wilt Virus can be identified at early stages, helping farmers manage diseases before severe crop losses occur (Naidu and Hughes, 2001; López *et al.*, 2003).

2. Seed Health Testing

Seed-borne pathogens reduce seed quality and germination. ELISA is used in seed certification programs for detecting infected seeds and ensuring healthy planting material. (Naidu and Hughes, 2001).

3. Detection of Pesticide Residues

ELISA helps identify pesticide residues in fruits, vegetables, grains, soil and water samples. This supports food safety standards and environmental protection. (Wild, 2013).

4. Food Quality and Safety

The technique is used for detecting mycotoxins such as aflatoxins in food and feed products. It also helps monitor allergens and contaminants in processed agricultural products. (Wild, 2013).

5. Detection of Genetically Modified Organisms (GMOs)

The technology is widely employed for the detection of proteins produced by genetically modified crops. This capability supports regulatory compliance, product labelling and quality assurance programs in agricultural supply chains. It assists in GMO labeling, regulation and quality assurance.

6. Environmental Monitoring

Monitoring soil and water quality has become increasingly important due to the intensive use of agrochemicals. ELISA provides a rapid method for detecting environmental contaminants and contributes to sustainable resource management.

Advantages of ELISA

ELISA offers several advantages including high sensitivity, specificity, rapid analysis and cost-effectiveness. The technique is suitable for large-scale screening programs and requires relatively simple laboratory infrastructure. Its versatility allows application across plant, animal, food and environmental sciences.

Limitations of ELISA

Despite its advantages, ELISA has certain limitations. False positive or false negative results may occur due to cross-reactivity or improper sample preparation. The technique requires high-quality antibodies and careful standardization. Results obtained through ELISA should be interpreted carefully and when necessary, confirmed using complementary molecular techniques such as PCR. Additionally, ELISA may not distinguish between active and inactive pathogens. (Sutula *et al.*, 1986; Van Regenmortel and Dubs, 1993).

Future Prospects of ELISA in Agriculture

The future of ELISA in agriculture is promising due to continuous advancements in biotechnology, nanotechnology and diagnostic sciences. Researchers are developing next-generation ELISA systems with improved sensitivity, specificity and faster detection capabilities.

The incorporation of nanomaterials such as gold nanoparticles and quantum dots has enhanced signal amplification, allowing the detection of pathogens and contaminants at extremely low concentrations. Portable and field-deployable ELISA kits are being developed to facilitate on-site diagnosis of plant diseases, reducing the time required for laboratory analysis and enabling timely management decisions. Integration of ELISA with biosensor technologies and microfluidic devices is further improving the speed and accuracy of

agricultural diagnostics. These innovations are expected to support real-time monitoring of crop health and environmental quality.

The combination of ELISA with digital technologies, artificial intelligence and smartphone-based detection systems offers new opportunities for precision agriculture. Farmers and extension workers may soon be able to perform rapid disease diagnostics in the field and receive instant recommendations through mobile applications. Such advancements will contribute to improved disease surveillance, early warning systems and efficient crop management practices.

In addition, ELISA is expected to play an increasingly important role in food safety monitoring, detection of pesticide residues and identification of emerging plant pathogens. As agricultural production systems continue to evolve, ELISA will remain a valuable diagnostic tool supporting sustainable farming, food security and environmental protection.

Conclusion

As agriculture increasingly adopts precision technologies, ELISA continues to serve as a dependable diagnostic platform for disease detection, food quality assurance and environmental monitoring. Its affordability, adaptability and compatibility with emerging technologies ensure that ELISA will remain a valuable component of sustainable agricultural systems for years to come.

References

1. Clark, M. F. and Adams, A. N. (1977). Characteristics of the microplate method of enzyme-linked immunosorbent assay for the detection of plant viruses. *Journal of General Virology*, 34(3): 475-483.
2. Crowther, J. R. (2000). *The ELISA Guidebook*. Humana Press, New York.
3. Koenig, R. (1981). Indirect ELISA methods for broad specificity detection of plant viruses. *Journal of General Virology*, 55: 53-62.
4. López, M. M., Bertolini, E., Olmos, A. and Cambra, M. (2003). Innovative tools for detection of plant pathogenic viruses and bacteria. *International Microbiology*, 6: 233-243.
5. Naidu, R. A. and Hughes, J. D. A. (2001). Methods for the detection of plant virus diseases. *Plant Pathology*, 50(6):687-698.
6. Sutula, C. L., Gillett, J. M., Morrissey, S. M. and Ramsdell, D. C. (1986). Interpreting ELISA data and establishing the positive-negative threshold. *Plant Disease*, 70(8): 722-726.
7. Van Regenmortel, M. H. V. and Dubs, M. C. (1993). Serological procedures and ELISA in plant virology. *Archives of Virology*, 10: 421-457.
8. Wild, D. (2013). *The Immunoassay Handbook: Theory and Applications of Ligand Binding, ELISA and Related Techniques*. Elsevier Science.