



Inside a Biotechnology Laboratory: Equipment, Functions and Applications

*Nisha¹, Anvesha Singh¹, Sakshi Jha¹, Kanishka¹, Dr. M. V. Parikhia² and Dr. Jay M. Khaniya³

¹M.Sc. Scholar, Dept. of Genetics and Plant Breeding, College of Agriculture, JAU, Junagadh, Gujarat, India

²Associate Professor, Dept. of Biotechnology, College of Agriculture, JAU, Junagadh

³Assistant Professor, Dept. of Biotechnology, College of Agriculture, JAU, Junagadh

*Corresponding Author's email: nishaburdak4351@gmail.com

Agricultural biotechnology plays a crucial role in improving crop productivity, nutritional quality and sustainable farming practices. The success of biotechnological research and innovation depends largely on specialized laboratory equipment that ensures precision, sterility and reproducibility. This article highlights the essential instruments used in agricultural biotechnology laboratories, including microscopes, micropipettes, centrifuges, PCR machines, spectrophotometers, autoclaves and laminar airflow chambers. Their applications in plant tissue culture, molecular breeding, disease diagnostics and crop improvement are discussed. The article also emphasizes the importance of equipment maintenance, calibration and emerging technologies such as automation and artificial intelligence in advancing agricultural biotechnology and supporting global food security.

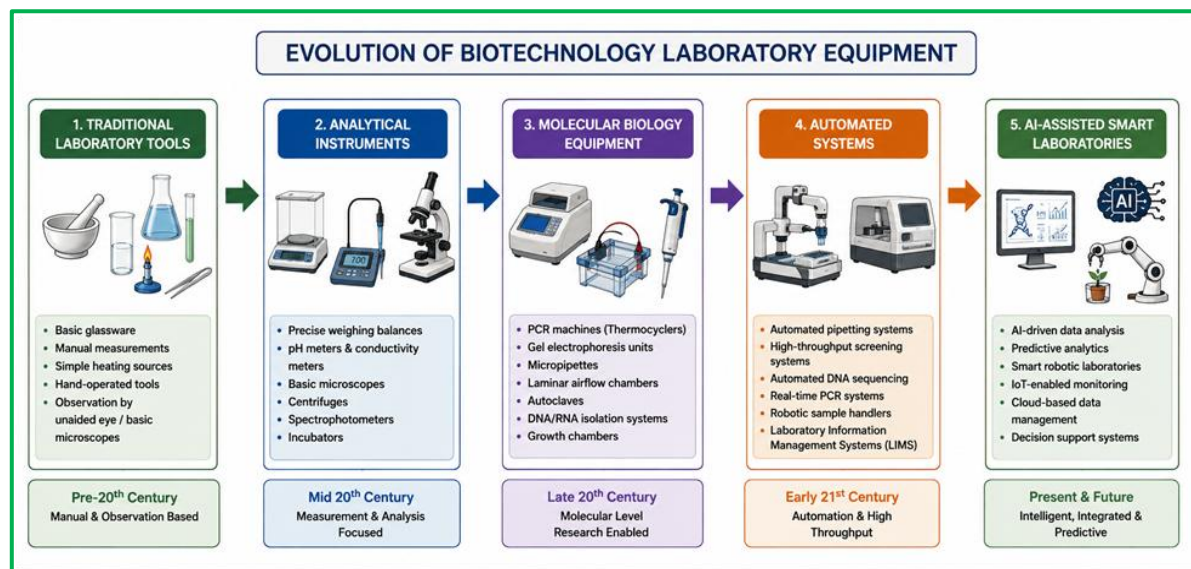
Introduction

Agriculture faces growing challenges such as climate change, declining soil fertility, emerging pests and diseases and the increasing demand for food. Agricultural biotechnology has become an essential tool for addressing these issues through the development of improved crop varieties, disease-free planting materials, biofertilizers and sustainable farming technologies. Behind these innovations lies a sophisticated laboratory infrastructure equipped with specialized instruments that ensure precision, sterility and reproducibility. From plant tissue culture and molecular breeding to pathogen detection and genetic analysis, modern biotechnology laboratories rely on a wide range of equipment to support scientific research and innovation. Over the years, laboratory facilities have evolved from simple glassware-based setups to advanced centers incorporating molecular tools, automation and digital technologies. Instruments such as microscopes, micropipettes, centrifuges, PCR machines, autoclaves and laminar airflow chambers have become indispensable for modern agricultural research. The success of agricultural biotechnology is closely linked to the availability of reliable laboratory equipment. This article highlights the major instruments used in biotechnology laboratories and their contributions to crop improvement, food security and sustainable agriculture.

The Evolution: From Simple Tools to Modern Technology

Laboratory equipment has evolved significantly alongside advances in agricultural and biological sciences. Early laboratories relied on simple glassware, balances and microscopes, making research slow and less precise. The Industrial Revolution introduced standardized equipment and improved optical instruments, enhancing accuracy and safety.

The development of molecular biology in the twentieth century brought sophisticated tools such as PCR machines, gel electrophoresis systems and spectrophotometers, revolutionizing crop improvement, plant disease diagnosis and genetic research. Today, biotechnology laboratories integrate automation, robotics, artificial intelligence and digital data management, enabling faster, more accurate and highly efficient agricultural research.



The Anatomy of a Lab: Essential Equipment Types

While distinct scientific sub-disciplines require custom analytical toolkits, the foundational framework of nearly all academic, clinical and industrial research facilities relies on a universally consistent architecture of core instruments working in tandem. To understand the fundamental operations of a functional facility, we reference the structural blueprint detailed in "Equipments required in biotech lab", which categorizes these critical instruments below.

1. Electronic Balance

The electronic balance is an analytical instrument engineered to calculate the gravitational mass or weight of a given substance with exceptionally high precision. In biotechnology, where formulations demand accurate preparation down to the microgram, these balances feature draft shields to block ambient air currents from skewing calculations.

Agricultural Application: Preparation of tissue culture media for micropropagation of banana, sugarcane, potato and horticultural crops.

2. Thermometer

A thermometer is a device used to track thermal energy and record temperature variations within an experimental system. Modern biotechnology setups heavily employ digital or infrared probes linked directly to logging software to continuously track chemical or enzymatic reactions.

Agricultural Application: Maintaining the optimum pH of plant tissue culture media and microbial culture media for biofertilizer production.

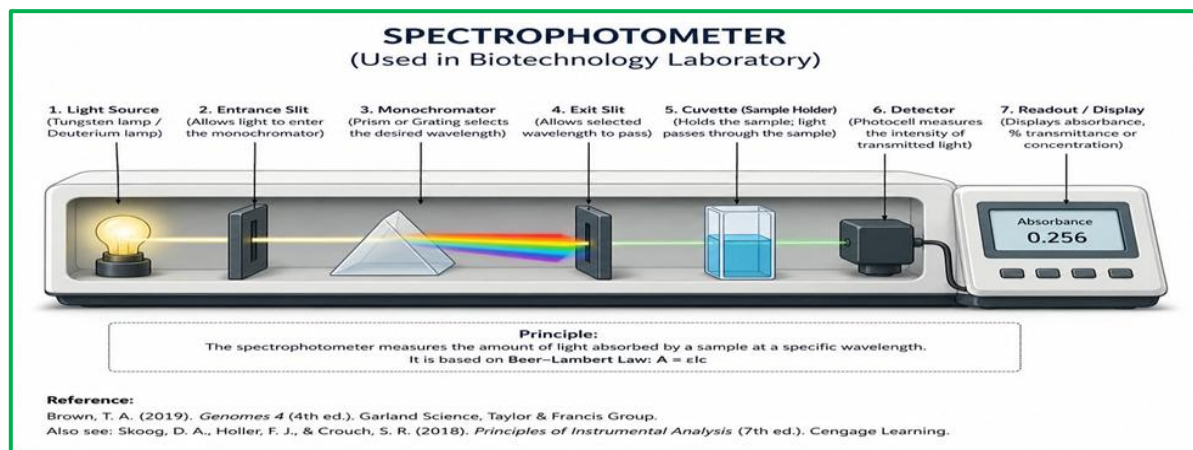
3. pH Meter

A pH meter is an electronic instrument utilized to determine the hydrogen-ion activity in a liquid solution, reflecting how acidic or basic (alkaline) the substance is. Because biological macromolecules like proteins and nucleic acids are highly sensitive to changes in their chemical environments, maintaining a stable pH is vital for experimental success.

Agricultural Application: Detection of plant pathogens, observation of cell division and assessment of tissue culture growth.

4. Spectrophotometer

A spectrophotometer is an optical device that projects a specific wavelength of light through a fluid solution to record the amount of light absorbed or transmitted by a target chemical compound. This data allows researchers to identify unknown molecules and accurately calculate their concentrations.



Agricultural Application: Quantification of DNA, RNA, proteins, chlorophyll and plant metabolites.

5. Microscope

The microscope is a fundamental tool in biotechnology, enabling the visualization of microscopic biological structures and processes. It plays a crucial role in cell culture, microbiology, tissue engineering and genetic research by allowing scientists to monitor cell health, division and responses to treatments. Advanced instruments such as scanning electron microscopes (SEM) provide high-resolution images of cellular components, viruses and proteins, supporting detailed biological analysis.

Agricultural Application: Detection of plant pathogens, observation of cell division and assessment of tissue culture growth.

6. Micropipette

A micropipette is a standard handheld instrument designed for the ultra-precise measurement and volumetric transfer of minuscule liquid volumes, typically measured within the microliter (μL) scale. Because even a microscopic error can compromise an entire reaction, these tools are essential for assembling delicate molecular assays like DNA extractions, PCR amplification setups and enzyme assays.

Agricultural Application: DNA extraction, PCR preparation, marker-assisted selection and genetic transformation studies.

7. Centrifuge

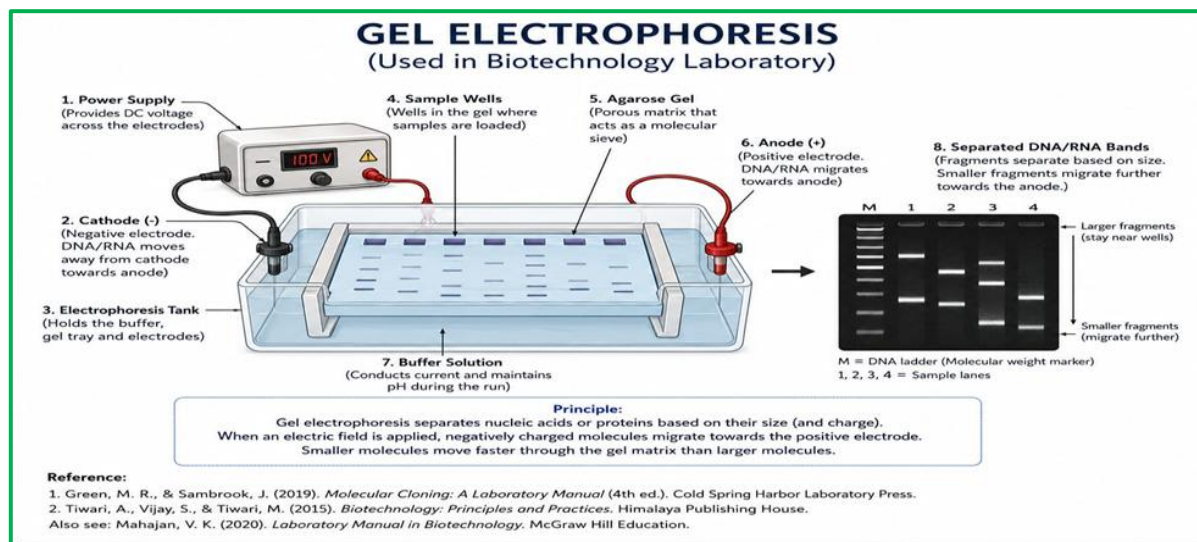
The centrifuge is an essential device used to separate individual components of a liquid mixture based on their varying physical sizes and molecular densities. It accomplishes this by spinning samples around a central axis at exceptionally high angular velocities. Driven directly by centrifugal force, denser particles form a compact pellet at the bottom of the tube, while the lighter liquid phase remains on top.

Agricultural Application: Isolation of plant DNA, RNA, proteins and microbial cultures for molecular analysis

8. Gel Electrophoresis Unit

Gel electrophoresis is a widely used technique for separating DNA, RNA, or proteins based on their size and electrical charge. Essential in genetic analysis, forensics, and diagnostics, it involves loading samples into a gel matrix and applying an electric current. Negatively charged molecules migrate toward the positive electrode, with smaller fragments moving faster through the gel pores than larger ones, producing distinct separation bands for analysis.

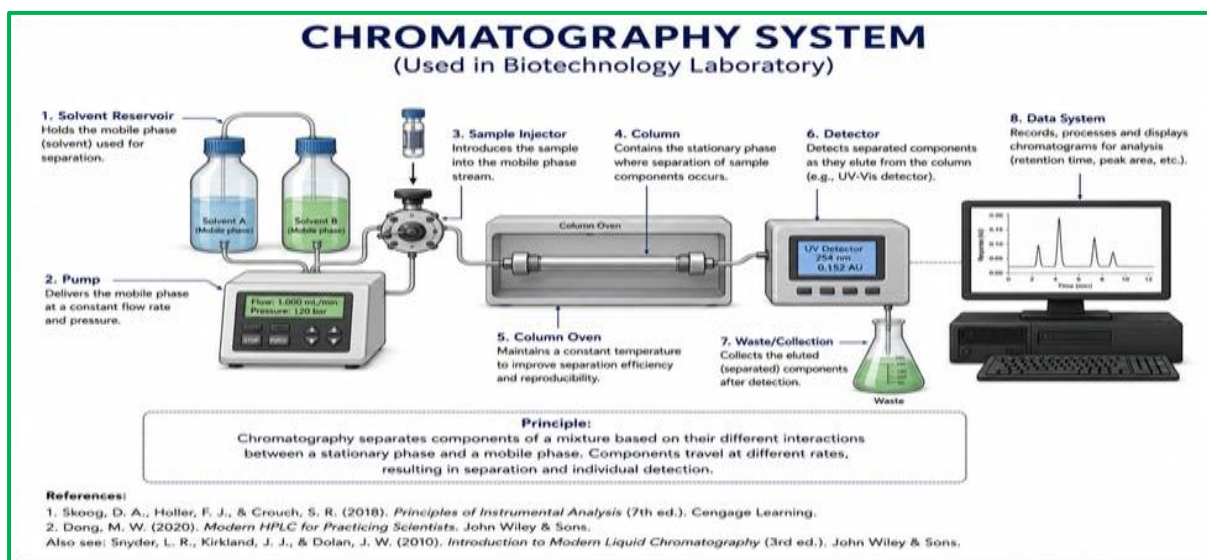




Agricultural Application: Verification of PCR products and analysis of genetic diversity among crop varieties.

9. Chromatography System

A chromatography system refers to an analytical or preparative platform utilized to resolve complex molecular mixtures into individual pure components. The process works by dissolving the mixture into a mobile phase and pumping it through a stationary phase. Individual molecules interact differently with the matrix based on their size, charge, or binding affinity, causing them to exit the column at different times.



Agricultural Application: Used to analyze plant hormones, pesticide residues, nutrients and other compounds in crops and soil for quality assessment and food safety

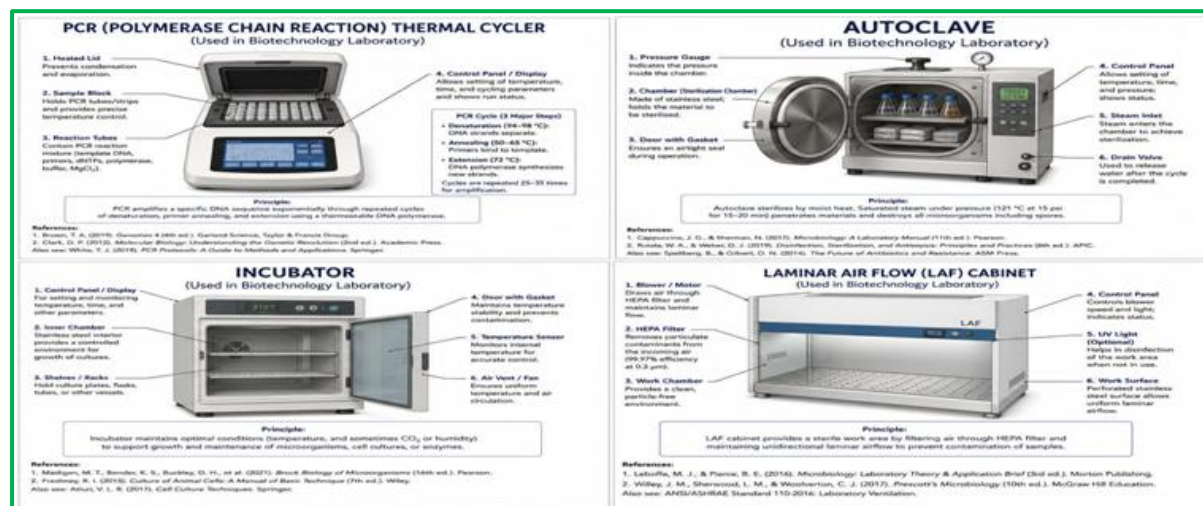
10. PCR Machine (Thermocycler)

The Polymerase Chain Reaction (PCR) machine, commonly called a thermocycler, is a highly automated instrument designed to target specific segments of DNA and copy them exponentially, producing millions of duplicates from a minimal initial template in a short window of time via rapid temperature shifting.

Agricultural Application: Detection of plant pathogens, marker-assisted breeding, varietal identification and transgenic crop analysis.

11. Incubator

An incubator is an insulated chamber engineered to provide a strictly regulated, uniform microclimate tailored for growing and maintaining microbial cultures, mammalian cell lines, or plant tissues. The device strictly regulates air temperature, ambient humidity and specific gas levels.



Agricultural Application: Used for culturing beneficial microbes such as Rhizobium, Azotobacter and phosphate-solubilizing bacteria for biofertilizer production and plant disease research.

12. Autoclave

An autoclave acts as a critical line of defense against biological contamination by using high-pressure, saturated steam to completely sterilize glassware, surgical tools, growth media and hazardous biological waste. The instrument operates by raising internal pressure, allowing steam to reach temperatures well above boiling point (typically 121°C).

Agricultural Application: Sterilization of culture media and instruments used in plant tissue culture laboratories.

13. Laminar Air Flow Chamber

A laminar air flow chamber is an enclosed clean-bench workspace designed to safeguard delicate biological samples from airborne contamination. It operates by drawing ambient room air through an internal High-Efficiency Particulate Air (HEPA) filter system, which traps 99.97% of microscopic particles, blowing a clean, smooth, uniform stream of sterile air across the working bench to block external pollutants from entering.

Agricultural Application: Essential for plant tissue culture, micropropagation and aseptic transfer of explants

How these equipment help society

The operational reach of biotechnological instrumentation extends far past academic research, directly improving modern agriculture, medicine and environmental sustainability. Below is a structured visualization mapping standard core tools directly to their massive real-world impact:

Sector	Core Equipment Utilized	Real-World Tangible Impact
Agriculture	Incubators, Laminar Flows, PCR Systems	Developing high-yielding, climate-resilient, disease-resistant crop strains; rapid micropropagation of completely disease-free seed stocks (e.g., banana, potato).
Medicine & Health	PCR Thermocyclers, Centrifuges, Microscopes	Rapid, high-confidence pathogen diagnosis; mass optimization and synthesis of life-saving vaccines and targeted global gene therapies.
Environment	Chromatography Systems, Advanced pH Meters	Engineering high-efficiency eco-friendly bio-fertilizers; precise identification and tracking of trace environmental pollutants for bioremediation.

The Golden Rules of Maintenance and Calibration

Accurate and reproducible results depend on properly maintained laboratory equipment. Even minor errors in measurement or environmental conditions can affect experimental outcomes. Therefore, regular maintenance and calibration are essential for ensuring reliability and precision.

- **Preventive Maintenance (PM):** Routine cleaning, inspection and replacement of worn components to prevent equipment failure and extend instrument life.
- **Calibration:** Verification of instrument readings against certified standards to ensure accurate and trustworthy results.

The Future of Biotechnology Laboratories

Biotechnology laboratories are increasingly adopting automation, robotics and artificial intelligence to improve efficiency and reduce human error. IoT-enabled instruments allow real-time monitoring, data analysis and predictive maintenance, ensuring smoother laboratory operations. In addition, portable "lab-on-a-chip" technologies are making advanced DNA and protein analyses possible in remote field locations, expanding the reach of biotechnology in agriculture and healthcare.

Conclusion

Laboratory equipment is the foundation of research, healthcare, education and industrial innovation. Evolving from simple glassware to advanced automated systems, these tools have greatly enhanced scientific discovery and problem-solving. Their impact extends beyond laboratories, supporting food security, gene therapy development and environmental protection. As technology advances, laboratory instruments will become more efficient and sophisticated, helping scientists address future challenges and promote a healthier, more sustainable world.

References

1. Dragosits, M. and Mattanovich, D. (2013). Adaptive laboratory evolution – principles and applications for biotechnology. *Microbial Cell Factories*, 12(1):64. <https://doi.org/10.1186/1475-2859-12-64>
2. Fernandes, T., Osório, C., Sousa, M. J. and Franco-Duarte, R. (2023). Contributions of adaptive laboratory evolution towards the enhancement of the biotechnological potential of non-conventional yeast species. *Journal of Fungi*, 9(2): 186. <https://doi.org/10.3390/jof9020186>
3. Nambisan, P. (2017). Laboratory biosafety and good laboratory practices. An Introduction to Ethical, Safety and Intellectual Property Rights Issues in Biotechnology, 253-271. *Elsevier*.
4. Wang, G., Li, Q., Z., Yin, X., Wang, B. and Yang. (2022). Recent progress in adaptive laboratory evolution of industrial microorganisms. *Journal of Industrial Microbiology and Biotechnology*, 50(1): kuac023. <https://doi.org/10.1093/jimb/kuac023>